

**SUPPLEMENTARY FILE B**



# **Research Priorities Project**



**Royal College of Speech and  
Language Therapists**

**Research Priorities Project**

# We are **investigators**



Amit Kulkarni



Lauren Longhurst

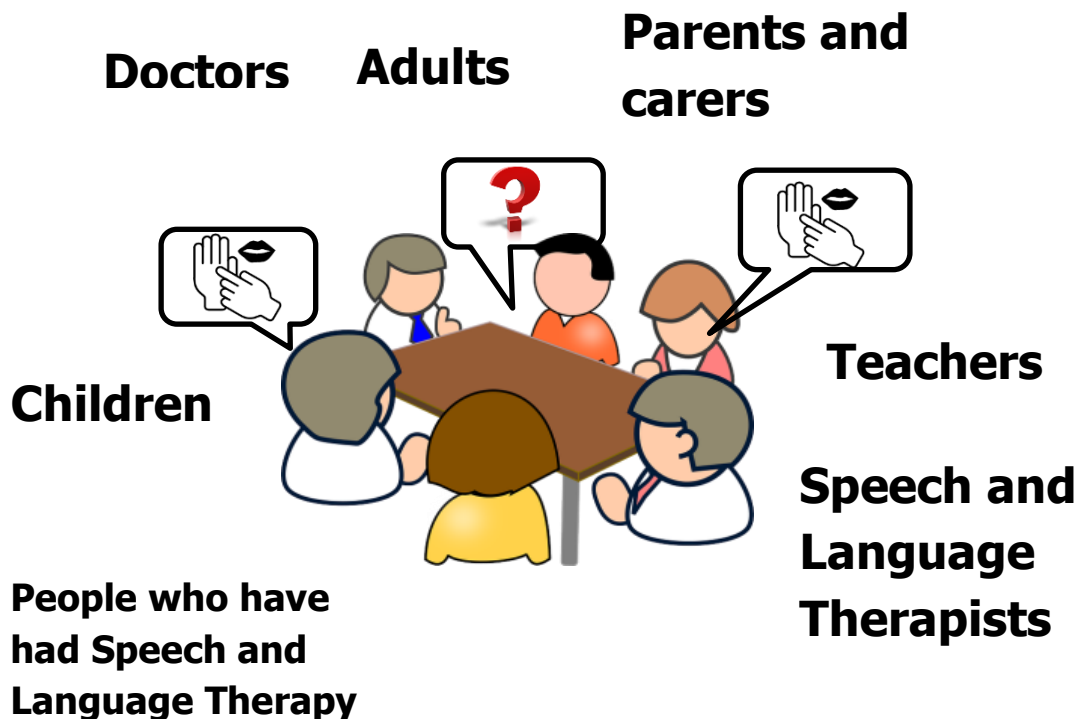


Katie Chadd

We want to find out about **Speech and Language Therapy**.



To find out, we are talking to **different people**.



We are asking people **questions**:



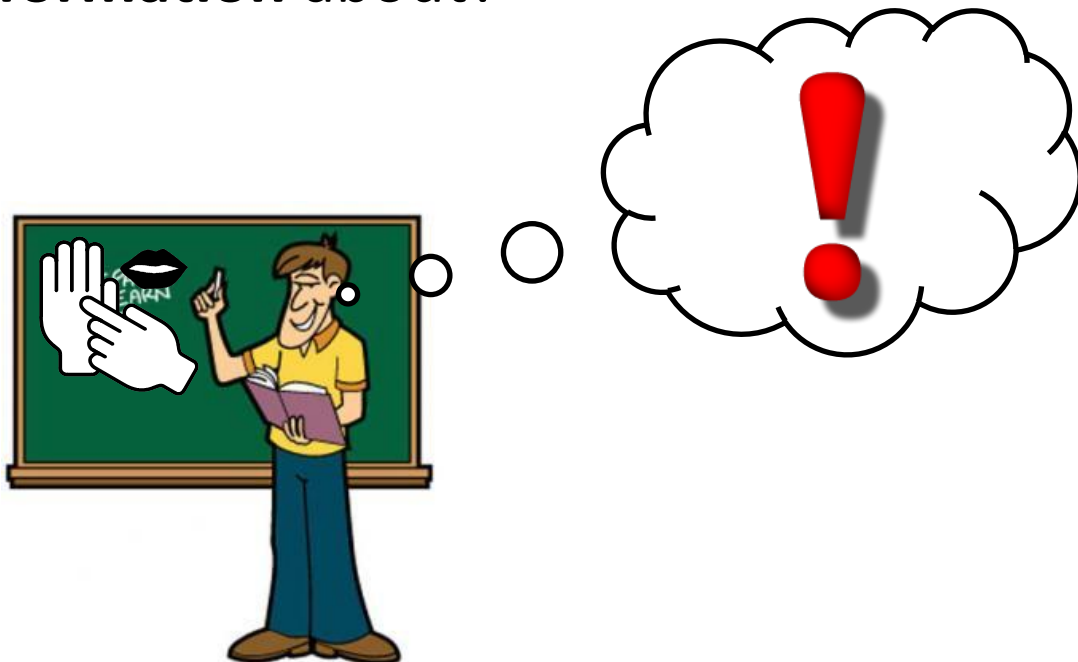
What do you **know** already about Speech and Language Therapy?



What do you think are the **most important parts** of Speech and Language Therapy?



What do you think are the most **important parts** of Speech and Language Therapy that you **want to find out more information** about?



Then we can **then tell other investigators to find out more information about** the important parts you have chosen.

Finding out the new information **can help make Speech and Language Therapy better!**

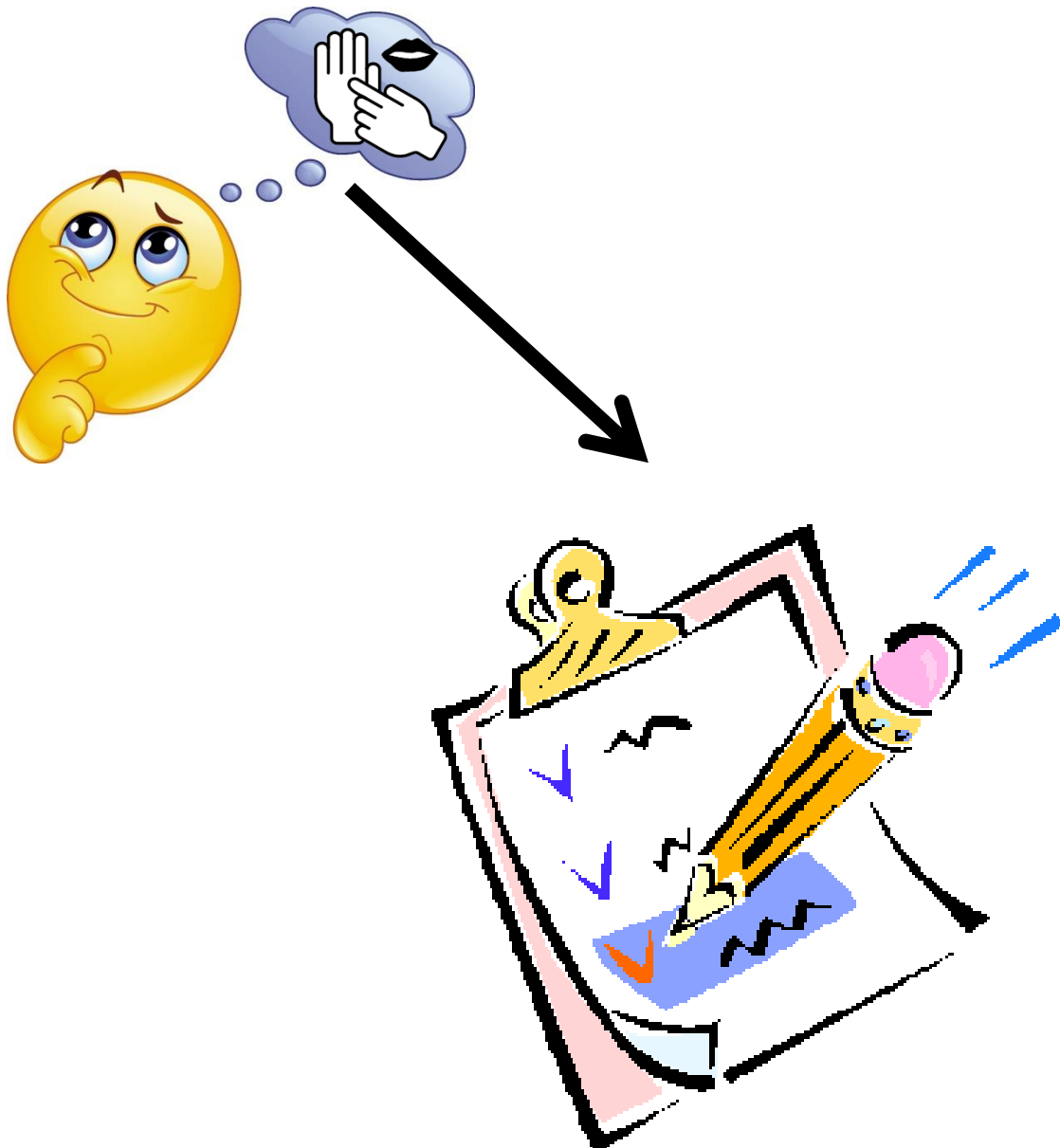


**Thank you for all your help!**



Afterwards, we will:

Use your suggestions to help us write a **long list of ideas about what we want to learn about Speech and Language Therapy.**



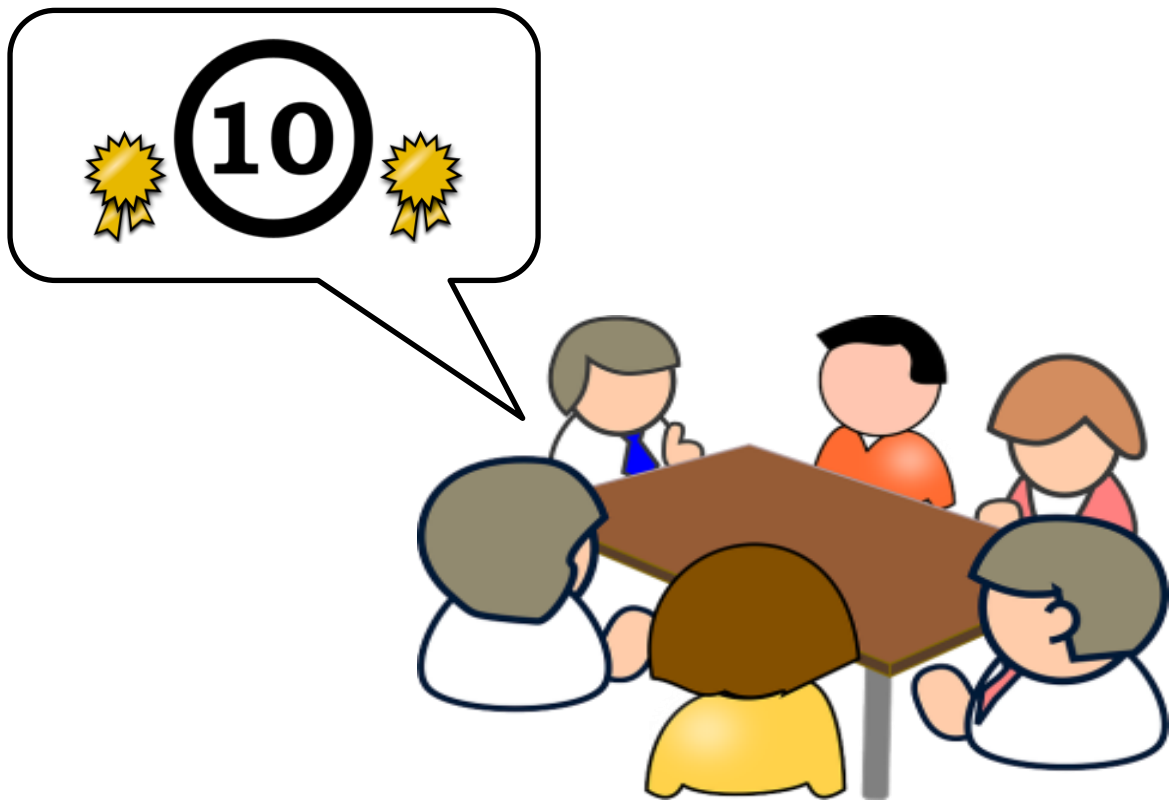
Ask everybody what they think are the **ten most important ideas**.



We might ask you- **Do you agree?**



We will tell you the **final decision** on the **top ten most important things to find out about Speech and Language Therapy.**



**In the future:**

We hope other **investigators find out the new information** and we will share it with you!



If you want to ask any more questions or tell us your thoughts you can **get in contact.**



**020 7378 3635**  
**info@rcslt.org**